

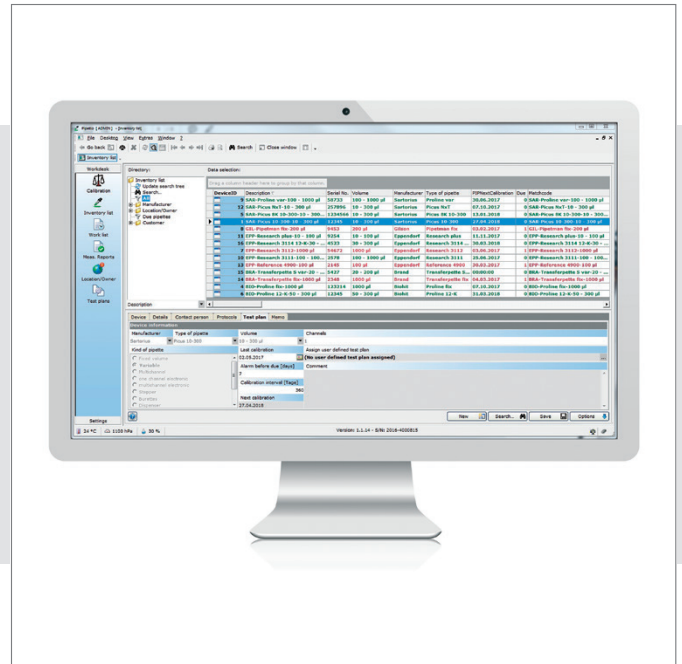


## Pipetto – Pipette Calibration Software

Professional pipette calibration software to manage your pipette data

### Advantages

- Complete ease of operation: Select and calibrate pipettes quickly and easily
- Calibration software for single and multi-channel pipettes, dispensers, burettes, etc.
- Seamless integration with your Cubis MPS and Speedcal mobile system
- Compatible with all standard balances
- Up-to-date pipette database



### Product Description

Pipetto calibration software is the professional pipette management solution from Sartorius. The software is available in three different versions: Basic, Standard, and Pro.

Basic version: Simple and specially designed for small in-house calibration laboratories that comply with ISO 8655.  
Standard version: Ideal for calibration laboratories with multiple workstations that comply with ISO 17025.  
Pro version: The optimum solution for accredited calibration laboratories that comply with ISO 17025 and FDA 21 CFR Part 11.

The Standard and Pro versions both have network capability and user management features including individual task assignment options. All three software solutions are exceptionally easy to use – pipettes can be selected and calibrated with just a few clicks. The software language can also be switched between German and English.

Optional expansion modules for Pipetto Standard and Pro:

- For connecting to an MPS pipette calibration balance
- For connecting to a Speedcal mobile multi-channel calibration balance
- For calculating the expanded measurement uncertainty\*
- For importing data from other calibration programs e.g. PiCaSo

\*Only available for Pipetto Pro

## Technical Specifications

Version	Pipetto Basic	Pipetto Standard	Pipetto Pro
Single workstation with dongle	•	•	•
Connection to all standard balances	•	•	•
Meets requirements of ISO 8655 in full	•	•	•
Meets requirements of ISO/IEC 17025 and ISO 8655		•	•
Meets requirements of FDA 21 CFR Part 11 (audit trail, electronic signature, etc.)			•
Network capability   central database		•	•
Optional: Environmental data automatically imported via the climate module PCom box		•	•
Optional: PCom factory calibration		•	•
Optional: PCom DAkkS calibration		•	•
1 user per license	•		
10 users per license		•	•
German and English language options	•	•	•
Up-to-date database	•	•	•
Pipetto expansion module – MPS		•	•
Pipetto expansion module – Speedcal		•	•
Pipetto expansion module – expanded measurement uncertainty			•
Pipetto data import from a PiCaSo database	•	•	•
IQ remote		•	•
OQ remote		•	•
1 year software support included	•	•	•
1 × remote installation support included	•	•	•

• available | possible

## Ordering Information

Order number	Description
<b>Basic</b>	
PI20301-S	Pipetto version 1.1 Basic with 1 dongle
<b>Standard</b>	
PI20201-S	Pipetto version 1.1 Standard with 1 dongle
PI20202-S	Pipetto version 1.1 Standard with 1 PCom box and 1 dongle
PI20203-S	Pipetto version 1.1 Standard with 1 DAkkS PCom box and 1 dongle
<b>Pro</b>	
PI20101-S	Pipetto version 1.1 Pro with 1 dongle
PI20102-S	Pipetto version 1.1 Pro with 1 PCom box and 1 dongle
PI20103-S	Pipetto version 1.1 Pro with 1 DAkkS PCom box and 1 dongle
<b>Expansion modules</b>	
PI20404-S	Pipetto expansion module – MPS
PI20402-S	Pipetto expansion module – Speedcal
PI20403-S	Pipetto expansion module – expanded measurement uncertainty
PI20405-S	Pipetto data import from a PiCaSo database

Sartorius Lab Instruments  
GmbH & Co. KG  
Otto-Brenner-Strasse 20  
37079 Goettingen, Germany  
Phone +49.551.308.0  
Fax +49.551.308.3289  
www.sartorius.com  
USA Toll-free +1.800.635.2906  
UK +44.1372.737159  
France +33.1.70.62.50.00  
Italy +39.0362.5557.11  
Spain +34.913.586.095  
Russian Federation +7.812.327.53.27  
Japan +81.3.3740.5408

Specifications subject to change without notice.  
Copyright Sartorius Lab Instruments GmbH & Co. KG.  
Printed in the EU on paper bleached without chlorine.  
Publication No.: W-2154-e170801  
Order No.: 98649-023-77  
Ver. 08 | 2017