



Syntax description

Sartorius

SICS Interface via Ethernet

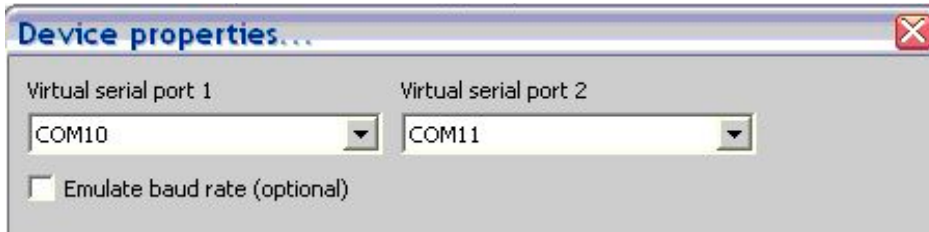
How to use SICS via Ethernet



1) Install Virtual Serial Ports Emulator (VSPE)

2) Start VSPE

3) Press Button „Create new device“, select „pair“ and set both virtual serial port 1 and 2 to free ports (e.g. COM10 and COM11).

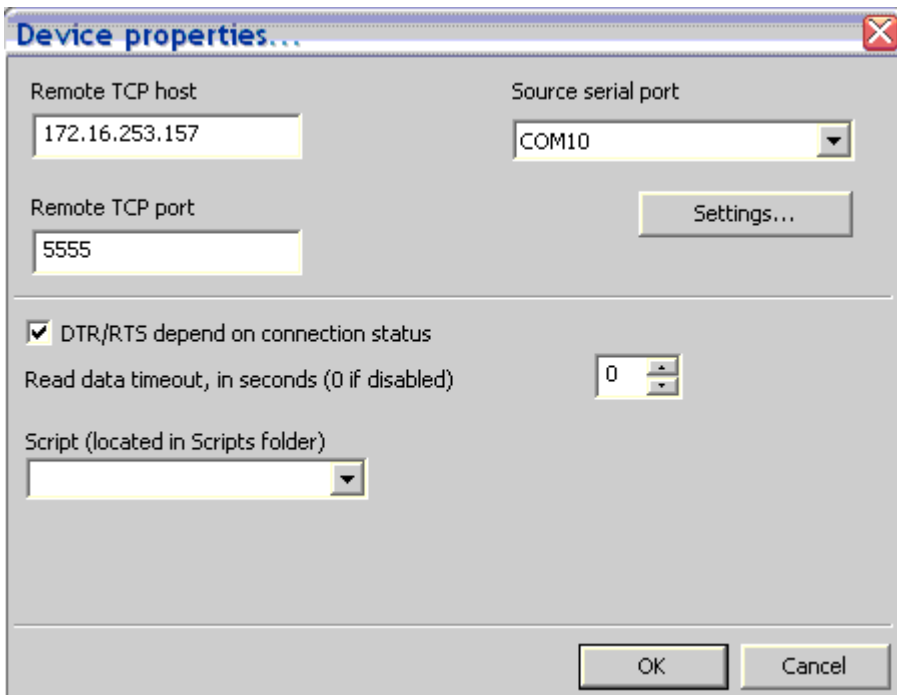


4) Press Button “Create new device” and select “TCPClient”.

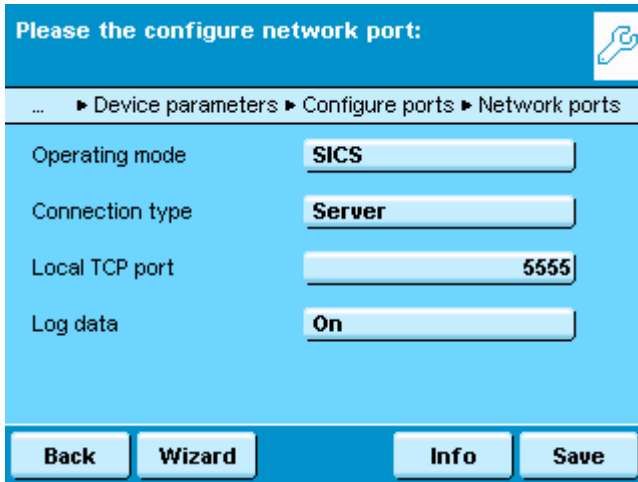
- Enter IP-address of cubis balance to “Remote TCP Host”.

- Enter Cubis Port to “Remote TCP port”.

- Enter virtual serial port 1 (e.g. COM10) to “Source serial port”

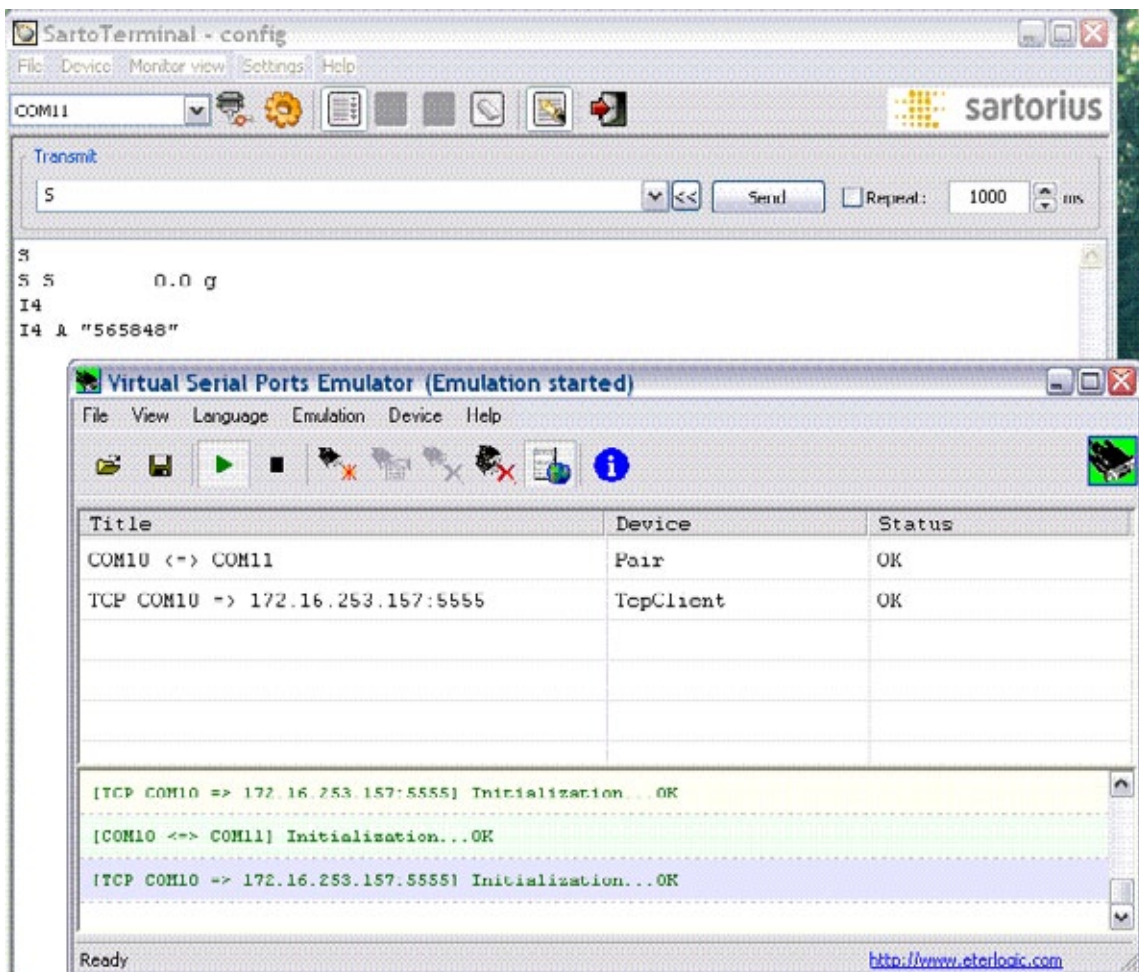


5) Configure Network port in Cubis (Menu -> Device parameters -> Configure ports -> Network ports setup):

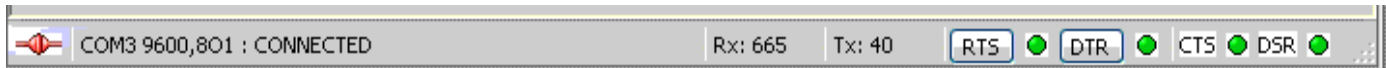


6) Start Virtual Serial Ports Emulator (press button with green arrow)

7) Start SartoTerminal and set serial port to second virtual port (e.g. COM11)



8) Connect SartoTerminal with cubis (Button near “COM 11”). If connection is OK, points RTS, DTR,CTS and DSR will become green (down right) and symbol DISCONNECTED changes to CONNECTED.



9) Enter your command (e.g. S) to the line and press button “Send” with CR+LF.

Sartorius Weighing Technology GmbH
Weender Landstrasse 94–108
37075 Goettingen, Germany

Phone +49.551.308.0
Fax +49.551.308.3289
www.sartorius-mechatronics.com

Copyright by Sartorius,
Goettingen, Germany.
No part of this publication may be
reprinted or translated in any form
or by any means without the prior
written permission of Sartorius. All
rights reserved. The status of the
information, specifications and
illustrations in this manual is indicated
by the date given below. Sartorius
reserves the right to make changes to
the technology, features, specifications
and design of the equipment without
notice.

Information status:
September 2011, Sartorius,
Goettingen, Germany

Specifications subject to change
without notice. RS · KT
Publication No.: WMS6011-e11092