

OPC UA SimApi User Guide

March 23, 2021



Contents

1	Introduction	3
1.1	Terms.....	3
1.2	Features	3
1.2.1	Browsing the OPC UA node hierarchy.....	3
1.2.2	Array data	4
1.2.3	Current and Historical data access is strongly recommended	4
1.2.4	Reading large blocks of data	4
1.3	OPC UA Compatibility.....	4
2	Prerequisites	6
2.1	OPC UA server security	6
2.1.1	OPC UA Certificates.....	6
2.1.2	Firewalls between SimApi and OPC UA server.....	6
3	Installation and setup	7
3.1	Configuring SimApi settings	7
3.1.1	How this looks like in SIMCA-online.....	8
4	Support	9

1 Introduction

This document is the user guide for the OPC UA SimApi from Sartorius Stedim Data Analytics.

A SimApi is the connection between the Umetrics® Suite and external data sources.

The OPC UA SimApi described in this document is the connector between an OPC UA (Unified Architecture) Server and SIMCA®-online Solution and SIMCA® Multivariate Data Analysis Solution.

For a detailed list of changes in different versions of this SimApi, see the **Version Info.txt** file that comes with the installation.

For more information on SimApis, see sartorius.com/umetrics-simapi.

1.1 Terms

OPC UA name	Comment
OPC UA node	Can correspond to a node or tag in SIMCA-online depending on the OPC UA node class.
OPC UA node class	The type of node. Can be Object, Variable or other types.
Object (an OPC node of node class Object)	Exposed as a node by the SimApi
Variable (an OPC node of node class Variable)	Exposed as a tag by the SimApi

1.2 Features

The SimApi implements the following SimApi features; Refer to sartorius.com/umetrics-simapi to learn more about the general SimApi features.

- Connect to an OPC UA server (using the OPC UA binary protocol) with support for numerical values (analog and discrete in the OPC terminology) and text values
- Hierarchical view of the OPC UA nodes.
- Setting to specify which OPC UA nodes to expose in the SimApi. Can be used to only show a subset to shorten the startup time of the SimApi.
- Option to control which OPC references are followed when enumerating tags at startup.
- Use provided credentials, or anonymous access
- Current and historical continuous data for OPC UA nodes of Node Class **Variable**
- Optional support for current data for OPC UA Variables with array data (no support for historical data)
- Multiple instances of the SimApi can be run on the same SIMCA-online server

1.2.1 Browsing the OPC UA node hierarchy

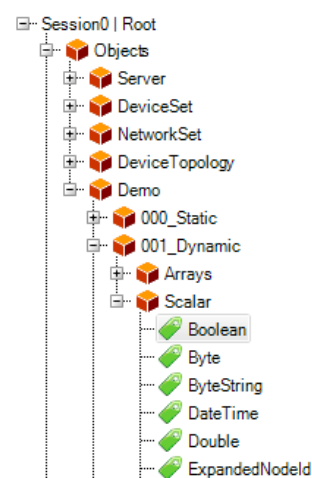
The SimApi browses the node hierarchy of the server on startup. This can take time on a big server, or slow network connection. You can make it quicker using two settings:

- by specifying **Top level Node IDs** to browse only certain branches of the server's hierarchy.
- change to browse only references of type **Organizes**. Learn more about this in 3.1.

1.2.1.1 On how the SimApi exposes the OPC UA node hierarchy

OPC UA Nodes have different node classes.

- The Object node class is used to represent systems, system components, real-world objects and software objects. This corresponds to Nodes (containers) in the SimApi.
 - If a node is referenced in many places in the server OPC UA hierarchy, it will be exposed only in one place by the SimApi.
- The Variable node class is used to represent the content of an Object. A variable is exposed as a tag in the SimApi.

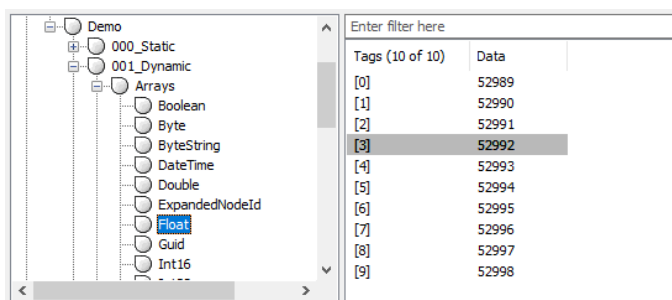


- OPC UA variables of the classes `BaseVariableType`, `BaseDataVariableType`, or `DataItem` and its subclasses are exposed as tags, and are used to read data for in SIMCA-online or SIMCA.
- OPC UA variables that contains/reference other variables are exposed as nodes by the SimApi. It will not be possible to read data for the variable that is exposed as a node, only for the contained other variable which are exposed as tags.

1.2.2 Array data

Array data consist of more than one value per observation. An example of array data is a measurement made at many wavelengths. To handle array data the SimApi translates each element in the array to a tag which can be used in SIMCA-online.

For example, if the array data for the Variable **Float** is [52090, 52990, 52991, ..] the SimApi would create tags [0],[1], [2], ... inside a SimApi **node** named **Float**. To use obtain the values, SIMCA-online connects the tags [0], [1], [2] to individual variables in a project.



Limitations: only current data is supported for array data. Sartorius has yet to find an OPC UA server that supports historical data for array data. Single dimension arrays are supported (no matrices).

Array data is optional in the SimApi. To use it, turn it on in the configuration utility.

When the SimApi starts, it queries the UA server for the size of the array data. The sizes of the arrays are fixed once the SimApi has started. This process adds additional time to the startup process because each variable is queried for array data. To make startup faster, use the 'Top Level NodeIDs' setting in the configuration.

1.2.3 Current and Historical data access is strongly recommended

Important: to work well in SIMCA-online, nodes/tags used must be able to provide both current data and historical data to SIMCA-online when it asks for it. In SIMCA-online you cannot use different tags for current and historical data. Read more in the SimApi Guide.

1.2.4 Reading large blocks of data

A maximum array length is negotiated automatically between the OPC UA server and client when establishing the connection, e.g. 65.536. This can be viewed in the log of the server.

If `ReadHistoricalData` found more data points than this number, an error will occur and no data would be returned.

To avoid this error, a maximum number of values can be set in the SimApi settings (see 3.1). For "Number of values per read operation", a number should therefore be entered below this maximum array length, e.g. 30.000. If more data is now available for the specified period, the server sends it in several portions and the error is avoided.

A value of 0 means no limitation, but this means that the automatic negotiation described above takes place resulting in a limit anyway.

1.3 OPC UA Compatibility

OPC UA is a large specification. https://en.wikipedia.org/wiki/OPC_Unified_Architecture. This SimApi supports a small subset of functionality as defined earlier.

It has been developed for and tested with:

- **Siemens WinCC** SCADA system. Versions V7.4SP1 and TIA V15SP1 version 7.x.
- **Siemens SIMATIC S7-1500** controller. Version V20.08.01.
- **KEPServerEx** version 6 and 5 (optional component of Ambr 250)
- **MFCS 4 OPC UA Server.**

- **Unified Automation UaAnsiCServer**, version 1.9.1. <https://www.unified-automation.com/>
- **Prosys OPC UA Simulation server**. Version 5.0.4. <https://prosysopc.com/>
- **OPC Foundation demo server** `opc.tcp://opcu.demo-this.com:51210/UA/SampleServer`

2 Prerequisites

To use the SimApi on a computer, it must have the following software installed:

- The Microsoft Visual C++ Redistributable for Visual Studio 2015-2019. Often these are already installed on a computer (for example they are installed automatically by SIMCA or SIMCA-online), but if the SimApi fails to start because of this, download and install the latest version from <https://support.microsoft.com/en-us/help/2977003/the-latest-supported-visual-c-downloads>

2.1 OPC UA server security

The OPC UA SimApi uses the following concepts that control access to an OPC UA server:

- **SimApi Users** are users known on the OPC UA server. The username and password for a SimApi connection is configured in the configuration utility of the SimApi. It is passed to the OPC UA server when establishing the connection. If no user is configured, anonymous access is used.
- **Certificates** determine which computers can connect to the OPC UA server. When connecting to the OPC UA server the OPC UA SimApi creates a certificate. For getting access to the OPC UA server the certificate must be trusted by the OPC UA server.

In addition, networking firewalls also must allow the SimApi to connect to remote servers.

These topics are explained in detail below.

2.1.1 OPC UA Certificates

OPC UA Certificates are expected when you log on to the OPC UA server with a username and password. For anonymous access no certificate is needed.

Some servers have certain directories, where trusted certificates are deposited. Consult your OPC server documentation to learn more.

On WinCC, access fails on the first connection because the server does not know the certificate created by the OPC UA SimApi. The OPC UA server automatically places it in the directory for untrusted certificates. If the certificate is then moved from there to the directory for trusted certificates, access to the OPC UA server is granted the next time the connection is established.

2.1.2 Firewalls between SimApi and OPC UA server

A networking firewall between the SimApi running in SIMCA, or SIMCA-online server and the OPC UA server can restrict network traffic so that the SimApi doesn't work. The TCP port used by your OPC server, as specified in the connection string, needs to be open so that traffic from the SimApi can reach the OPC server.

3 Installation and setup

Refer to the **SimApi Guide** located at sartorius.com/umetrics-simapi for general step by step instructions that apply when installing a SimApi. That document also contains many troubleshooting and testing tips when installing a SimApi.

3.1 Configuring SimApi settings

To change settings for the SimApi in SIMCA-online; launch the **Server Options** utility, and on the SimApi tab, click **Configure...** for the SimApi instance you want to configure. The same guidelines apply to SIMCA, although all screenshots and examples below are for SIMCA-online.

The following dialog is displayed. Configure the settings you require for you environment.

After saving and exiting, the SIMCA-online server service needs to be restarted for the changes to be effective.

If the connection for a configuration is made for the first time, you must ensure that the certificate is classified as trusted by the OPC UA server (see 2.1 and 2.1.1).

The following settings are available.

Setting	Explanation
OPC Server connection string	The connection string to the target OPC server, ending with the port number (1234). For example, <code>opc.tcp://server.example.com:1234</code>
Top level OPC UA nodes	Specify which parts of the OPC UA node tree to expose to shorten the startup time. Leave blank for the entire server, or specify one or more OPC UA Nodetids, one on each row. Tip: you can see the Nodetids in the server log after starting it with this setting left empty. Click the ... button to specify Nodetids. Here is an example of a Nodetid: <code>ns=4;s=Demo.History</code>
Username	The credentials used to connect to the OPC UA server provided above. Leave blank to use anonymous access.

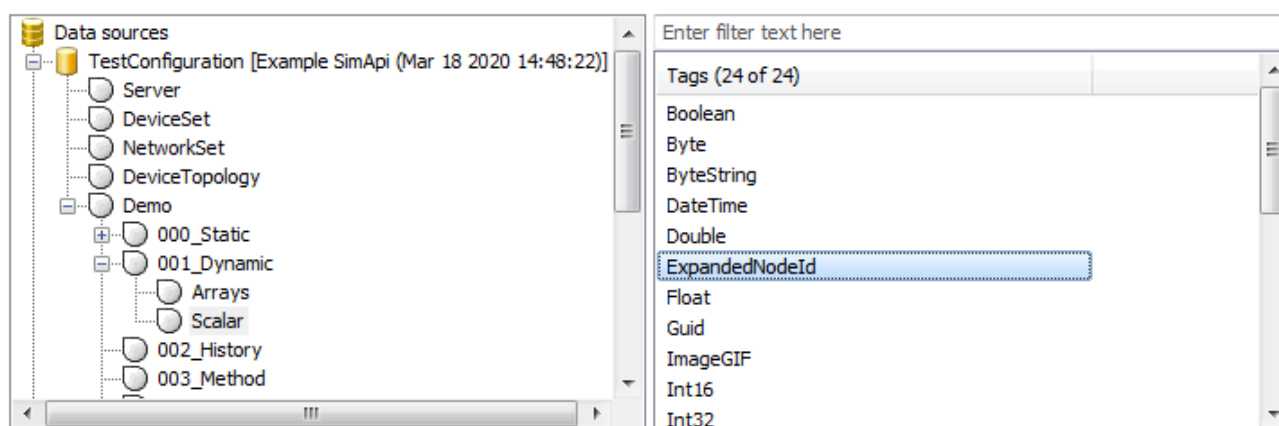
Password	The credentials used to connect to OPC UA server provided above. Leave blank to use anonymous access.
OPC UA operation time out (ms)	Sets the timeout in milliseconds, before a OPC UA api call is canceled.
Browse node references	Controls which nodes are exposed by filtering OPC nodes on their reference type. Organizes - fewer nodes and faster startup. HierarchicalReferences - more nodes and variables-in-variables.
Maximum number of values per read operation	Sets the maximum number of values per node in each read operation. If more values exist, the read operation is automatically split into multiple reads. 0 means that there is no maximum.
Create array tags	If OPC variables should be analyzed during startup to determine if they provide array data. For such a variable one tag for each array element is created. See 1.2.2 above.
Log Level	Controls how much information is written to the log file. (Debug, Information, Warning, Error, Critical). Debug is helpful for troubleshooting issues with the SimApi.
Log Max Size (MB)	Controls the max size of the log file before creating a new. Setting this to 0 means infinite size.

In the picture above, you can see an example of a configuration:

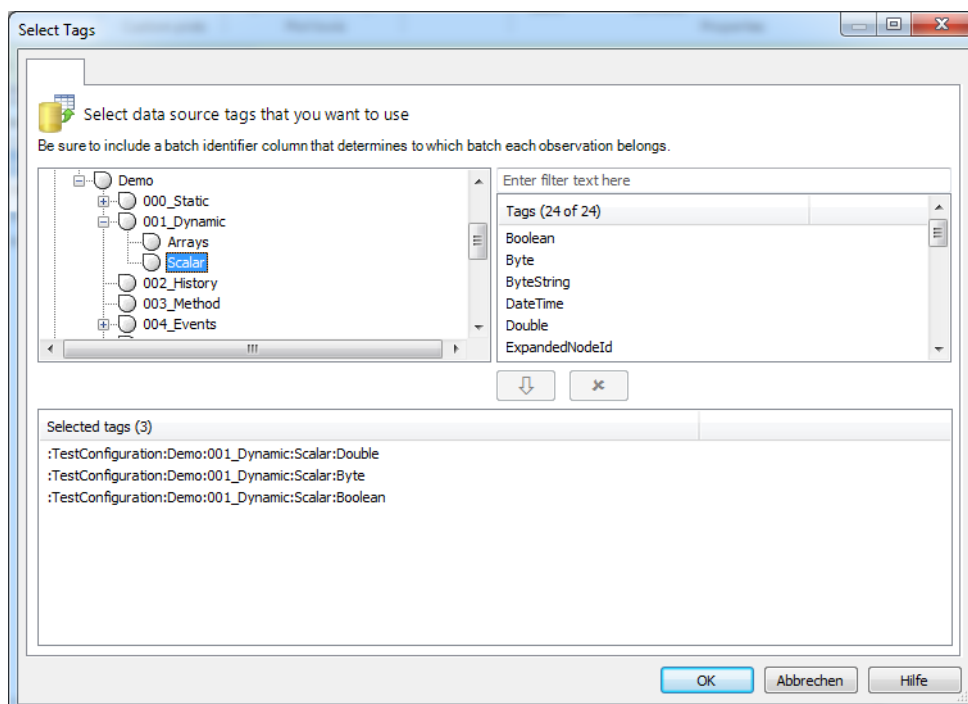
- We have one server, **c001736**, whose endpoint URL is entered in OPC server connection string field.
- **Create array tags is True**. The server will create array tags for all applicable OPC UA Variables of the server. See 1.2.2 above.
- The **Log Level is set to "Debug"**, so debug entries will be written into the log file. Tip: use Debug when configuring the SimApi initially but change it to Information if the log file grows in size too quickly when you use the SimApi in production.

3.1.1 How this looks like in SIMCA-online

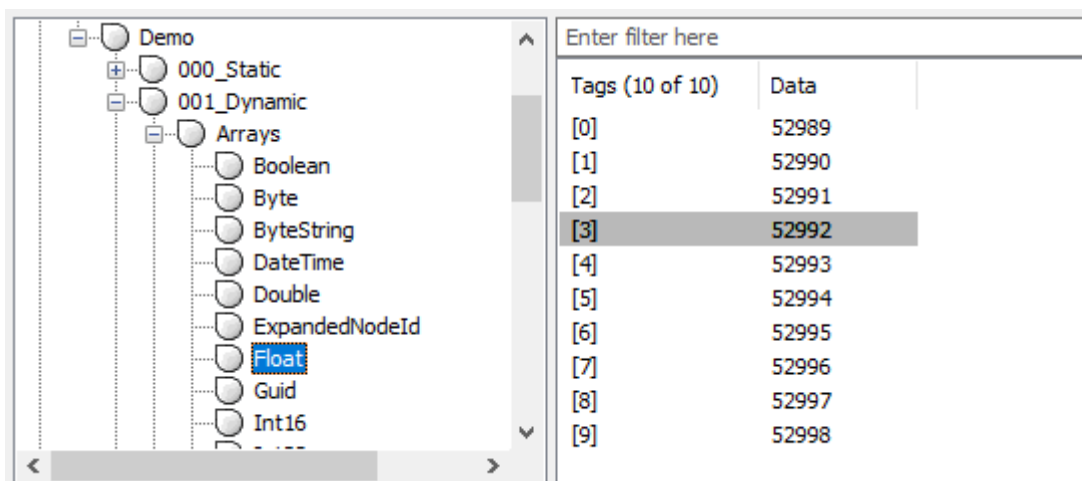
This is what the above settings result in in SIMCA-online:



The OPC UA nodes of the OPC UA server are visible under the top-level node. You can select OPC UA nodes now as tags in SIMCA-online:



The tags that are created for array data in an OPC Variable **Float** looks like this:



4 Support

This SimApi is developed by Sartorius Data Analytics. For support, please visit sartorius.com/umetrics-support