

Cubis[®] III
Connect. Comply.
Simplify.

Simplifying Progress

SARTORIUS

Cubis® III

Direct Integration. Built-In Compliance.

Since its introduction in 2009, the Cubis® balance family has been the benchmark for premium laboratory weighing, chosen by scientists and quality professionals who cannot compromise on data integrity or regulatory compliance. Yet as digitalization accelerates, balancing compliance requirements with rising IT complexity and integration costs has become a major pain point for modern labs.

Cubis® III delivers built-in compliance and direct connectivity to any digital ecosystem – from standalone setups to fully integrated environments. By eliminating the need for an extra software layer, it dramatically reduces both immediate and long-term cost and complexity, wherever you are on your digitalization journey.

“Cubis® III delivers precision weighing solutions for the Lab 4.0 era, connected, compliant, and designed to grow with your lab.”

Sebastian Weber

Product Manager, Sartorius





Direct Connectivity, No Extra Software

- Open, industry-standard interfaces – no vendor lock-in.
- Seamless integration with LIMS, ELN, MES, and ERP – no extra middleware.
- Modern, IT-friendly architecture built on established standards.



Compliance Without Complexity

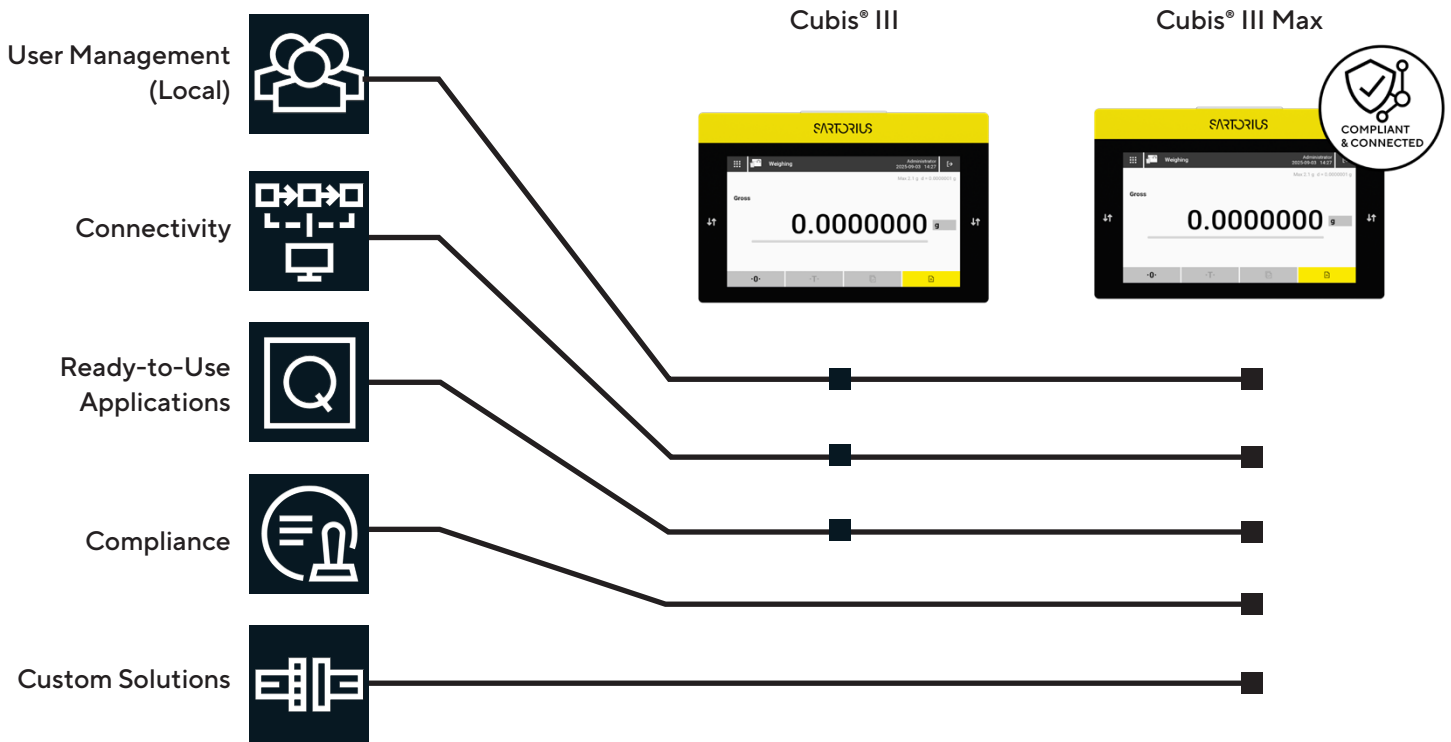
- Compliance starts at the balance: 21 CFR Part 11 and GxP-ready by design.
- Validated electronic records and signatures where data originates.
- Tap-to-sign workflows with full traceability and secure user management (local or centralized).
- Always audit-ready with complete audit trails and long-term PDF/A archiving.
- Pharmacopeial weighing guidance built in and consistently enforced.



Efficiency That Pays Off

- High accuracy with less sample conserves precious materials.
- Intelligent QApps workflows guide operators, boosting efficiency and reducing errors.
- Modular today, scalable tomorrow – a future-proof platform with regular updates and open integration standards.

Two Packages. Every Application Covered.



Cubis® III – Standalone Optimized

For labs needing top-tier weighing without IT overhead, Cubis® III delivers best-in-class performance with direct connectivity, built-in user management, RFID one-tap login, and guided cleaning/calibration. Compliance and connectivity upgrades are available as needs grow.

Number of QApps: **40+**

Compliance and Security

- Local user management
- RFID (authentication)

Connectivity

- Fileshare and FTPS
- REST-API
- OPC UA | LADS

Workflows Support

- Advanced QApps
- User calibration

Cubis® III Max – Integration Optimized

For connected, regulated labs in pharma, medtech, and related fields, Cubis® III Max provides a compliant, end-to-end solution from secure data generation to enterprise integration—no extra software layer. Onboard workflows and easy multi-site deployment boost throughput and consistency.

Number of QApps: **60+**

+ Compliance and Security

- Audit trail & e-signatures
- USP/min weight
- Measurement uncertainty
- Network user management (LDAP)

+ Connectivity

- Plug-and-play connectors

+ Workflows Support

- Special QApps
- External software connectors

Direct Connectivity

Easily connect your balance to any laboratory or enterprise system, without adding an extra software layer. From direct PC entry to full bidirectional LIMS integration, every interface your lab needs is built in.

Open, Standard-Based Connectivity

- Integrates into any laboratory IT landscape
- No additional software layer or middleware

Flexible Data Transfer

- Direct export of PDF, CSV, and TXT to file shares or FTP/FTPS
- Real-time OPC UA exchange with backward-compatible SBI and SICS

Modern Integration Interfaces

- Bidirectional REST web services integration
- Pre-configured connectors to LIMS, ELN, MES, and ERP systems

Built to Fit Your Digital Journey

- From standalone operation to full enterprise integration
- Standards-based architecture that adapts and grows with your lab

Every interface your lab needs



	PC Direct	Serial/ASCII (SICS/SBI)	File Transfer	Webservice (REST)	OPC UA
	Keyboard emulation for direct entry of values into text fields/boxes.	Supports the most widely adopted serial protocols for laboratory balance.	Transfer of files (TXT/PDF/Backups) of data records on a fileshare via SMB or FTP(S).	Bidirectional HTTP-based communication for advanced, workflow-driven integration.	Standardized and recognized machine-to-machine communication.
Typical Applications	Direct data entry to any text-based application like SAP or Microsoft Excel; eliminates transcription errors with zero IT effort.	Integration with legacy CDS, LIMS or custom automation solutions using established serial protocols.	Compatible with any software like LIMS that can parse files, store backups, audit trails and records directly in the network.	Bidirectional data exchange enables deep integration into LIMS, ELN and process control systems.	Industry-standard in industrial automation (MES/SCADA) and increasingly adopted across lab environments.

Fullfills Data Integrity



The Modular System Design That Is Ready for Your Needs

Weighing Modules

Choose from 44 weighing modules to match your application and workflow.

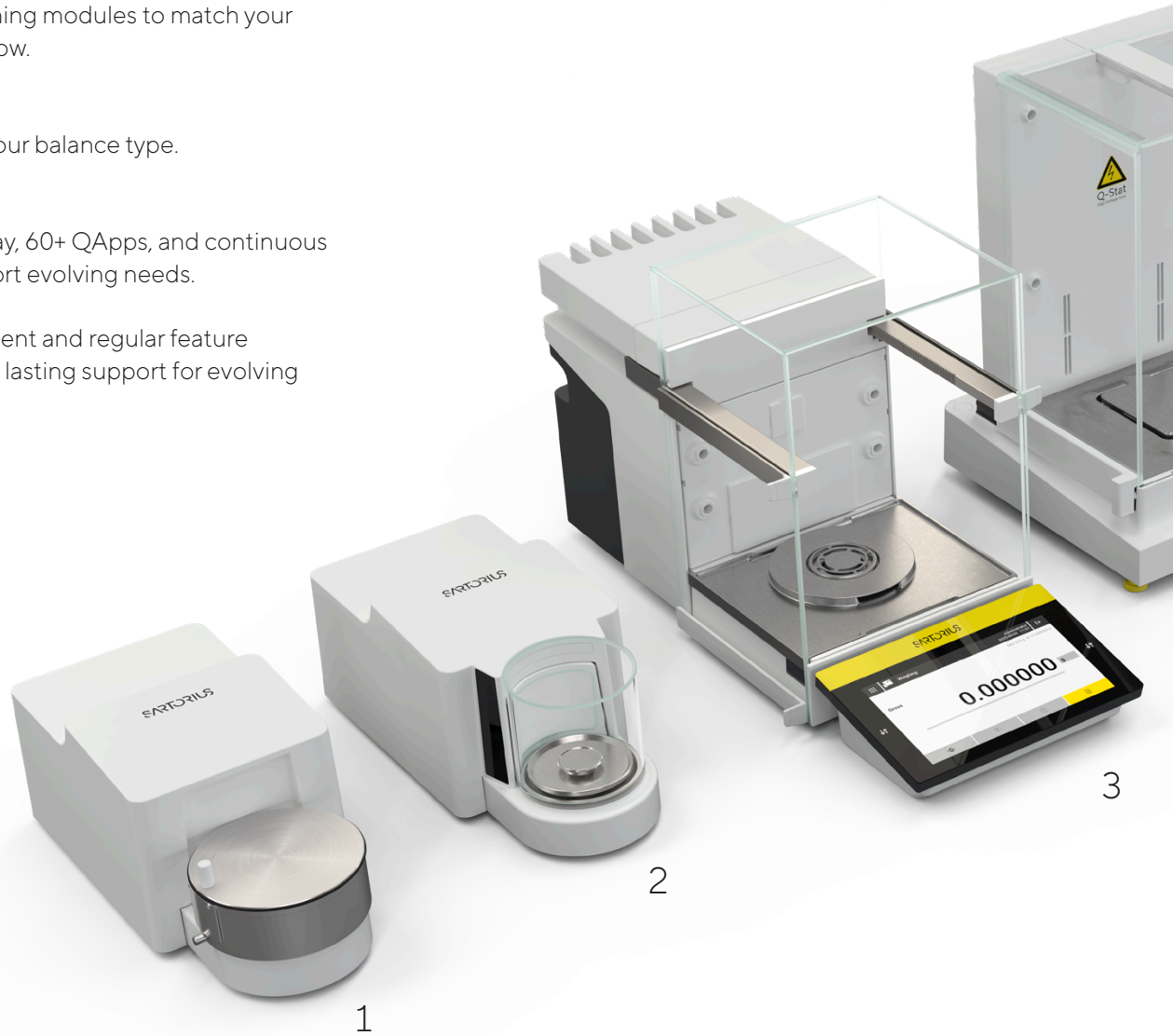
Draft Shields

7 designs tailored to your balance type.

Software and Display

Ultra-fast 7-inch display, 60+ QApps, and continuous development to support evolving needs.

Continuous development and regular feature enhancements ensure lasting support for evolving laboratory workflows.



1 & 2) Ultra and Micro-Balances

Maximum capacity between 2.1 g and 10.1 g | scale interval with a range of 0.1 μ g to 1 μ g.

- Automatic, motorized, round, glass draft shield with licensable built-in ionizer to eliminate electrostatic charges and automatic draft shield function for fast and easy operation, and available inner draft shield (accessory).
- Manual stainless steel draft shield for filter weighing applications in 2.1 g and 6.1 g.

3) High-Capacity Micro and Semi-Micro Balances

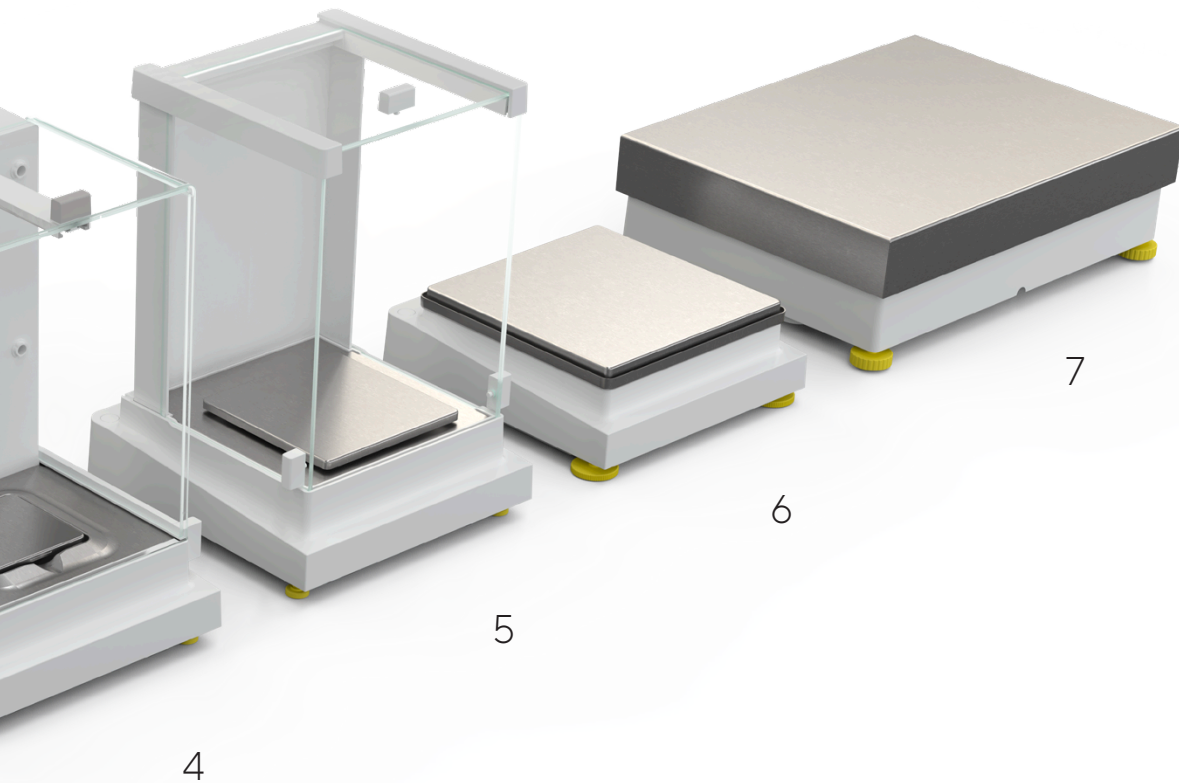
Maximum capacity between 21 g and 220 g | scale interval with a range of 0.001 mg to 0.05 mg.

- Automatic glass draft shield with licensable built-in ionizer to eliminate electrostatic charges and automatic draft shield function for fast and easy operation, and available inner draft shield (accessory).
- Integrated motion sensor for touch-free operation.

4) Analytical and Milligram Balances

Maximum capacity between 120 g and 5,200 g | scale interval with a range of 0.1 mg to 1 mg.

- Automatic glass draft shield with or without integrated ionizer to eliminate interfering electrostatic charges on samples and sample containers.
- Manual glass draft shield with smooth-action doors (Analytical model only).



5) Milligram Balances

Maximum capacity between 320 g and 5,200 g | scale interval of 1 mg.

- Easy to use manual glass draft shield.
- Removable flat stainless steel draft shield frame (not shown).

6) Precision Balances

Maximum capacity between 1,200 g and 14,200 g | scale interval with a range of 10 mg to 100 mg.

- Small footprint.

7) High-Capacity

Maximum capacity between 11,200 g and 70,200 g | scale interval with a range of 100 mg to 1 g.

- Large weighing pan.

Full Compliance

Adherence to ALCOA++ principles and data integrity expectations.

Secure, accurate and long-term data storage supporting compliance with FDA 21 CFR Part 11 and EU GMP Annex 11.

Date/Time	User	Action	Module
2026-04-23 12:16:55 (UTC+02:00)	Administrator	Login	Access management
2026-04-23 09:12:42 (UTC+02:00)	Administrator	Start	Task management
2026-04-23 04:28:03 (UTC+02:00)	Administrator	isoCAL	Calibration/adjustment
2026-04-22 16:27:14 (UTC+02:00)	Administrator	isoCAL	Calibration/adjustment
2026-04-22 04:26:24 (UTC+02:00)	Administrator	isoCAL	Calibration/adjustment
2026-04-21 16:25:36 (UTC+02:00)	Administrator	isoCAL	Calibration/adjustment

Ensure auditability with a complete system audit trail that captures every change on the instrument in-line with common compliance requirements.

Data backup

- Add meta-data
- Create backup file
- File transfer... 100 % ✓
- File transfer successful

OK

Automated, time-scheduled backups to network shared folders or external systems.

Audit trail - 64	
Login	
ID	64
Date/time	2026-04-23 12:16:55 (UTC+02:00)
Event	Login
Login name	Administrator
Module	Access management
Action	User has logged in to device website.
Display name	Administrator

Data integrity from the balance to the archive – secure transfer protocols, PDF/A-compliant files, and MD5 checksums ensure every record is traceable, and tamper-evident.

Role	Description
Administrator	User account for configuration and management
Guest	User account with restricted access
Operator	User account for everyday work
Service	User account for service technicians

User management with robust access control, 21 CFR Part 11 compliance, RFID, and LDAPS support for centrally managed user authentication.

Electronic signature

Display name: Administrator
Login name: Administrator

Streamline workflows with direct electronic signatures on the instrument for full traceability.

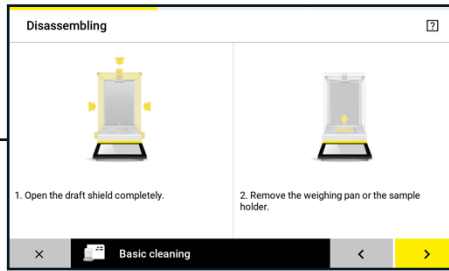
NTP server connection test

The connection to the NTP server '10.193.1.30' has been successfully established.

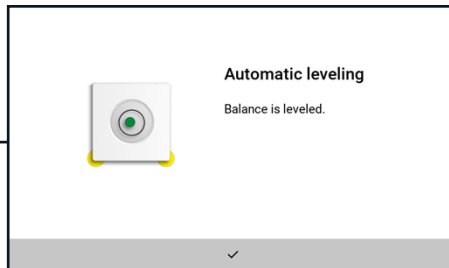
Device Information
Model: MCA27456-25001
Serial: 0037402687
PNC: 09.13.10.00.04 CN:452888E0
GAPP Center: 09-06-10.02.01
Comment: 04d8f64d5
IP: 10.220.89.15
2026-04-23 12:46

Automatic time synchronization via Network Time Protocol (NTP), ensuring a consistent and accurate system clock across all records.

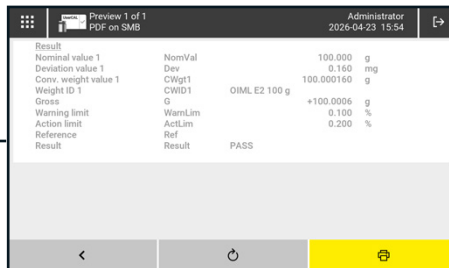
Technical Controls			
Integrity Core	Audit Trail and Alibi Memory	User Management	Clean
	Backup	Electronic Signatures	Level
	Safe Data Transfer	Time Synchronization	Calibrate and Adjust
			Enforced Routines



The Cleaning QApp with built-in guidance makes the cleaning process intuitive and hassle-free.



Motorized auto-leveling ensures your balance is always correctly positioned, quickly, easily, and without manual adjustment.

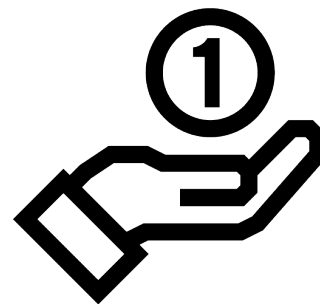


IsoCal and ReproTest for internal-calibration, and user calibration QApp for external-calibration; to follow EURAMET Calibration Guide, NIST Handbook 44, OIML, ASTM, hysteresis, and linearity; flexible to multiple calibration weights.



Simplify With Real Savings

Native connectivity and built-in compliance on the Cubis® III reduce the number of systems to install, qualify, and maintain, simplifying lifecycle management for IT and quality teams. High accuracy with minimal sample quantities also supports efficient use of valuable materials across both QC and R&D workflows.



Adaptable Balances and Accessories for Your Lab Requirements and Valuable-Sample Handling Needs (Less Waste. Zero Cross-Contamination)

- Two energy saving modes (Stby. and Deep Stby.)
- Hands-free & gesture motion controls
- Detailed alerts & tasks (Status Center)
- Automatic or assisted leveling system (Q-Level)
- Adaptive stability filters and delays
- Automatic doors (position memory)
- Left- or right-handed operation with 180° | 360° frame-free access
- Anti-static & magnetic protectors
- Sample-friendly handling (Q-Grid & Q-Grip)
- Environmental triple-sensor monitoring
- Density measurement & pipette calibration kits

Invest Once. Expand Anytime. Cubis® III Grows With Your Needs.

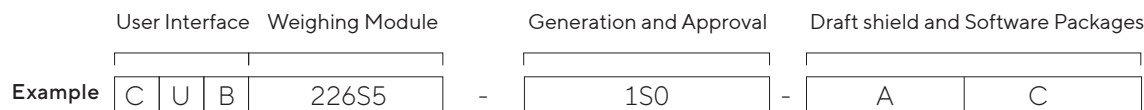
Cubis® QApps cover a broad range of routine and advanced weighing applications, from checkweighing and counting to density determination, minimum sample weight (USP <41>), and statistical weighing, addressing the tasks most commonly required in day-to-day laboratory practice.

For regulated environments, QApps are designed for validation in line with GAMP® guidelines, the recognized standard for computerized systems in the pharmaceutical sector.

For workflows beyond the standard portfolio, Sartorius develops customer-specific software modules built directly from your SOPs, ensuring your processes are reflected accurately and performed efficiently.



Configure Your Cubis® III Balance



Balance Type Weighing module	Leveling			Draft Shield					
	Automatic	Assisted	F	A	U	I	R	0	
Ultramicro 0.1 µg 2.7S	■		■	■					
Micro 1 µg 10.6S, 3.6P	■			■					
Micro 1 µg 6.6S	■		■	■					
High-Capacity Micro 1 µg 226S5, 116S2, 66P, 66S, 36P, 36S, 26P	■			■	■	■			
Semi-Micro 10 µg 225S5, 225S, 225P, 125S	■			■	■	■			
Analytical 0.1 mg 524S, 324S, 224S, 124S	■			■	■	■			
Precision 1 mg 5203S, 3203S, 2203S, 1203S, 623S, 323S	■			■	■		■		
Precision 10 mg 8202S, 6202S, 6202P, 4202S, 2202S, 1202S	■							■	
Precision 10 mg 14202S, 10202S		■						■	
Precision 100 mg 8201S, 5201S	■							■	
Precision 100 mg 12201S		■						■	
High-Capacity Precision 100 mg 70201S, 50201S, 36201P, 36201S, 20201S, 11201S		■						■	
High-Capacity Precision 1 g 70200S, 50200S		■						■	

Approval	Description
S0	Standard version (Europe, Asia-excl KR-JP, South America, SEA)
S1	Standard for Korea & Japan
S2	Standard (US, CA, MX)
S3	Standard ROW (AU, IL, AR)
EU	Verified Version EU (excl. France)
FR	Verified Version France
CN	Verified Version China
IN	Verifiable Version India
BR	Verifiable Version Brazil
JP	Verifiable Version Japan

Draft Shield	Description
F	Filter draft shield micro balances
A	Motorized draft shield
U	Manual draft shield
I	Motorized draft shield + lonizer
R	Stainless steel draft shield frame
0	Balance without draft shield

Cubis® III Configurator




If applicable, "C" for Complete Software package (Max).
Specifications subject to change without notice.

Germany

Sartorius Lab Instruments GmbH & Co. KG
Otto-Brenner-Strasse 20
37079 Goettingen
Phone +49 551 308 0

USA

Sartorius Corporation
3874 Research Park Dr.
Ann Arbor, MI 48108
Phone +1 734 769 1600

 For further contacts, visit
www.sartorius.com